



DataMan ID Readers
Product Guide

COGNEX

The Key is Performance

**we can
readit™**

Quick, powerful, and reliable ID code reading requires a level of performance that only Cognex® can deliver. Powerful decoding software, advanced image formation, and exceptional ease of use ensure optimum performance for all barcode reading requirements.

Powerful Decoding Software

Powerful decoding software enables DataMan® readers to deliver the industry's most reliable reading. 1DMax™, a best-in-class 1-D barcode reading tool, is optimized for omnidirectional barcode reading and decodes even the most difficult-to-read barcodes. 2DMax™, a breakthrough in 2-D decoding software based on patented Cognex pattern-matching technology, handles a wide range of degradations to the appearance of 2-D codes, such as QR and Data Matrix, no matter what the cause. And, IDQuick™ allows fast, high-performance reading of high-quality 1-D/2-D barcodes as well as low-contrast codes on uniform backgrounds.



Scratched



Low contrast



Extreme perspective



Multiple codes



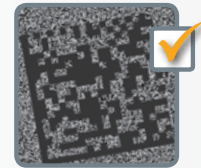
Poor focus



Low contrast



Curved surfaces



Noisy background

Advanced Image Formation

All DataMan readers optimally illuminate marks on a wide range of surfaces. Coupled with adjustable lens positions on many models, high-pixel image sensors, and optimized frame rates, DataMan readers have the ability to illuminate barcodes for successful barcode reading, on any surface, at any speed, every time.

Exceptional Ease of Use

Shared by all models, the intuitive DataMan user interface has been designed for quick setup and ease of use. Powerful verification software provides comprehensive mark quality monitoring, and a .NET command library (DMCC.NET) allows easy integration into PC applications.

Additionally, DataMan readers offer industrial protocols, such as PROFINET and EtherNet/IP, and Ethernet connectivity options for easy integration into the factory floor.



Wide Range of Models

DataMan offers the widest range of industrial ID readers and code quality verifiers—in both fixed-mount and handheld models. These readers handle everything from printed 1-D/2-D barcodes to the most challenging direct part marked (DPM) codes... and everything in between.

Handheld ID Readers

DataMan handheld readers provide a wide range of models—both corded and cordless—needed for applications in all industries. Whether a low-cost model for reading high-quality codes, or models with the performance needed for reading the most challenging codes, DataMan has what it takes to get the job done.



Fixed-mount ID Readers

The unprecedented small size of DataMan 100/200 fixed-mount readers make them ideal for applications where space is limited, such as item identification and process control. Models are available to read codes, at variable working distances, and on any production line... including the fastest document handling systems.



ID Verifiers

DataMan handheld and fixed-mount verifiers ensure that the code meets a manufacturer's or industry's requirements for quality.



	VSoC Powered, Ultrafast Barcode Reading	Fast 1-D Code Reading	Direct Part Mark (DPM) Reading	Difficult to Read 1-D/2-D Codes	Slow Moving, Well-Printed Codes
Fixed-mount:					
DataMan 500 X	✓	✓	✓	✓	✓
DataMan 500 QL	✓	✓			✓
DataMan 100/200 X		✓	✓	✓	✓
DataMan 100/200 Q		✓		✓	✓
DataMan 100/200 QL		✓			✓
DataMan 100/200 S					✓
Handheld:					
DataMan 8500			✓	✓	✓
DataMan 8100			✓	✓	✓
DataMan 7550/7550LR			✓	✓	✓
DataMan 750				✓	✓
DataMan 750 S					✓

Rugged Handheld Readers

Cognex offers the widest range of high performance industrial handheld ID readers. DataMan handheld industrial ID readers provide unmatched performance for DPM applications, where performance, ruggedness, and the ability to read challenging codes is essential.

DataMan 8000 Series

The rugged DataMan 8000 series of readers offers the industry's most advanced technology for reading 1-D and 2-D codes, and is the only handheld industrial ID reader that offers Industrial Ethernet communication and liquid lens technology, making the DataMan 8000 Series the only industrial handheld readers with variable focus.

Rugged design means these readers stand up to the demands of industrial/factory environments.



DataMan 8000 series features include:

- Integrated liquid lens technology for maximum application flexibility and depth of field
- Field changeable communication modules for RS-232/USB and industrial Ethernet
- Rugged ergonomic design for the most demanding factory floor environments
- UltraLight® illumination (bright field, dark field and diffuse lighting) for all material types and surfaces (DataMan 8500 model)

DataMan 750 Series

The compact size, ergonomic design and adjustable optics make the DataMan 750 series of readers exceptionally versatile and easy to use.

The DataMan 750 series features award-winning IDMax® code reading software that can handle a wide range of variations in code appearance resulting from degradations in code quality due to differences in mark quality or surface variations for both 1-D and 2-D codes.



The DataMan 750 series features include:

- ESD Safe
- Built-in laser aimer for quick alignment
- RS-232, USB, PS/2 Communications
- Rugged housing and lightweight design ensures long-lasting operation in industrial reading environments
- Adjustable optics to optimize resolution and working distance

Additional DataMan Handheld Readers:

DataMan 7550

The DataMan 7500 Series set the industry standard for reading 2-D Direct Part Mark (DPM) codes for part traceability. The DataMan 7550 cordless handheld reader features award winning 2DMax code reading software technology and Cognex UltraLight illumination that provides optimal lighting (bright field, dark field, and diffuse lighting) for all material types and surfaces.

Model Selection

DataMan handheld industrial ID readers are available for all your application needs:

	DPM 2-D Codes	Challenging 1-D Codes	Well Marked 1-D and 2-D Codes	ESD Safe	Wireless	UltraLight (Bright Field, Dark Field and Diffuse Lighting)
DataMan 8500	✓	✓	✓		coming soon	✓
DataMan 8100	✓	✓	✓		coming soon	
DataMan 7550/7550 LR	✓	✓	✓		✓	✓
DataMan 750 S			✓	✓		
DataMan 750	✓	✓	✓	✓		

Supported Symbolgies

1-D: UPC/EAN/JAN, Codabar, Interleaved 2 of 5, Code 39, Code 128, and Code 93, POSTNET, PLANET Code, Australia 4-State, Japan 4-State, UPU 4-State, Intelligent Mail Barcode, Pharmacode, GS1 DataBar

2-D: Data Matrix, QR Code and MicroQR Code. Optional: VeriCode®

Composite: (CC-A, CC-B), PDF 417, MicroPDF



UltraLight Illumination System



Dark field illumination for dot peen and laser DPM



Quadrant control for machined surfaces



Diffuse off-axis illumination for curved surfaces and highly reflective surfaces



Diffuse bright fields illumination for labels and marks with strong contrast

Versatile Fixed-mount ID Readers

Cognex DataMan fixed-mount ID readers represent a breakthrough in combining unmatched code performance (up to 45 reads per second), ease of use, and an extremely small size. Lighting, camera, processor, and communications are all integrated into an exceptionally small industrial housing, making the DataMan fixed-mount readers ideal for the most demanding applications.

DataMan 200 Series

The DataMan 200 series offers industry-leading performance with Cognex 1DMax and 2DMax code-reading technology, fast communication, and flexible optics.

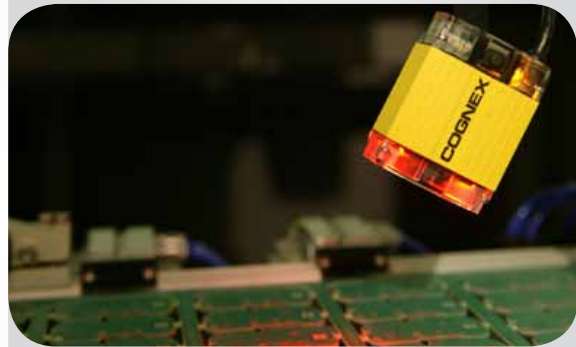


The DataMan 200 series include:

- Integrated lighting, camera, processor, and communications
- Optional variable focus, liquid lens technology so there is no need to manually adjust the focus on the line
- PoE Ethernet connectivity allows for real-time data and image transfer, and easier integration with plant controllers and information networks
- Integrated laser aimer

DataMan 100 Series

The DataMan 100 series offers industry-leading performance with Cognex 1DMax and 2DMax code-reading technology and easy setup.



The DataMan 100 Series features:

- Three-position adjustable lens and C-Mount lens options
- Integrated lighting and LED aimer
- Train and trigger button for ease of setup
- USB and RS-232 communications

Supported Symbolologies

1-D: UPC/EAN/JAN, Codabar, Interleaved 2 of 5, Code 39, Code 128, and Code 93, POSTNET, PLANET Code, Australia 4-State, Japan 4-State, UPU 4-State, Intelligent Mail Barcode, Pharmacode, GS1 DataBar

2-D: Data Matrix, QR Code and MicroQR Code. Optional: VeriCode®

Composite: (CC-A, CC-B), PDF 417, MicroPDF

Model Selection and Lens Options

Model Selection

DataMan S Models	DataMan QL Models	DataMan Q Models	DataMan X Models
For slow-moving parts or index motion where parts have well-marked 1-D/2-D codes.	Best-in-class 1D barcode reading with 1DMax, which is optimized for omnidirectional barcode reading and can handle extreme variations in code quality.	High-performance code reading of 1-D/2-D codes on fast-moving parts. Includes 1DMax and IDQuick technologies.	Highest-performance code reading for applications that require reading the most challenging DPM codes, 2-D codes or 1-D barcodes.

Liquid Lens Technology

The DataMan 200 series readers were the first fixed-mount readers to feature variable focus liquid lens technology. This optional feature of the DataMan 200 provides greater focal range and ease of setup with extremely fast response times. The liquid lens technology is ideal for applications with variable focus requirements.

Key Features

- Simplified setup and integration with a single touch software command autofocus
- Expanded reading capability with exceptional depth of field and field of view range
- No moving parts to malfunction or break down with use
- Rugged—resistant to shock, vibration and wear



DataMan Lens Options



The adjustable three-position lens offers 40/60/105 mm focus options.



The SHD lens provides increased magnification for reading codes with cell sizes down to 2 mil, while retaining the IP65 rating.



C-Mount lens versatility extends the range of lenses that can be used with DataMan 100 readers.



Red ESD-safe lens cover allows operations with static-sensitive devices, and/or minimises the effect of lighting changes in the ambient environment. Meets IEC 61340-5-1 and IEC 61340-5-2 requirements.

Revolutionary New DataMan 500 Fixed-mount Reader

DataMan 500 is a revolutionary new barcode reader that is powered by VSoC™, a proprietary all-in-one vision technology developed by Cognex. VSoC enables a new level of performance for area-scan image-based readers never seen before. With DataMan 500, seeing really is believing... one look at this product will change your idea of what barcode readers can do.

Unmatched Barcode Reading Performance

VSoC technology enables DataMan 500 to have a new level of read rate performance never seen before in a barcode reader.

- 1DMax and 2DMax code reading technology for unmatched read rates on even the most difficult 1-D barcodes and 2-D matrix codes
- New level of 1-D barcode reading speed with up to 90 decodes per second, twice the speed of other readers
- Ultrafast autoexposure (up to 1,000 frames/second) works on fast moving parts

Ease of Use

VSoC powered DataMan 500 sets a new level of ease of use, with:

- Fast deployment—just point and read
- Trigger-free reading and ultra high frame rates eliminate the need for an external trigger reducing overall setup cost and deployment time
- DataMan 500 reads so well that it doesn't have to be positioned optimally to get high read rates
- Achieves greater depth of field than other readers

Modularity

DataMan 500 offers flexible lens and field interchangeable lighting options:

- Lens Options: C-mount or variable focus liquid lens
- Lighting Options: Integrated high-powered LED lighting or optional powered twenty-four LED lighting accessory for high-performance reading



DataMan 500 with
Variable Focus Liquid Lens



High-Powered Illumination
Lighting Accessory

Model Selection and Communications

Model Selection

DataMan 500 QL

For high-speed, 1-D applications in food, beverage, consumer products, pharmaceutical, document handling, and logistics applications.

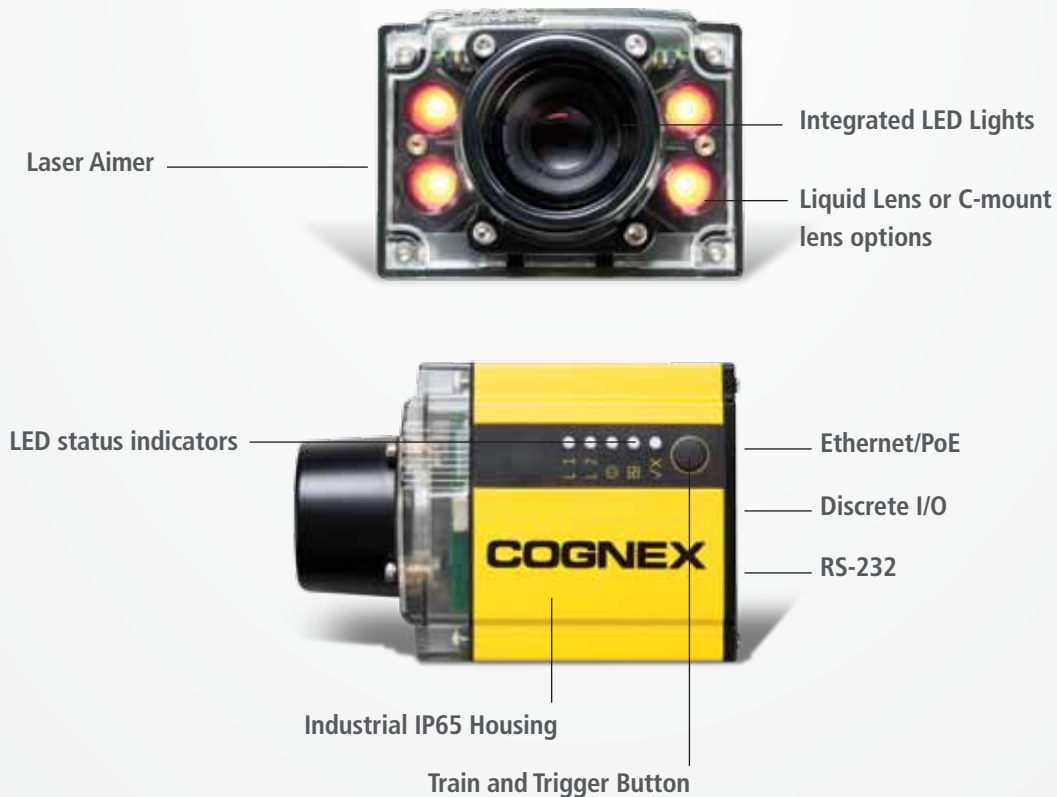
DataMan 500 X

All the benefits of the DataMan QL reader plus 2DMax to read even the most challenging matrix codes in automotive, aerospace, electronics, and medical device industries.

Industrial Communications

DataMan 500 offers Cognex Connect™ communication capabilities, which includes EtherNet/IP and PROFINET. DataMan 500 can be accessed from any terminal connected to the network, which means that no host PC is required to translate RS-232 or USB communications to a PLC or central network. The protocols also allow for data files and images to be archived directly through FTP support for later review and analysis. DataMan 500 also offers a .NET based command library for customizing user-specific GUIs and terminal interfaces as well as providing control via a simple command line interface.

DataMan 500 is powered over Ethernet (PoE) and does not require a separate power supply or communication line. DataMan 500 also supports RS-232 for integration into legacy systems.



Easy Setup, Deployment, and Communications

Initial setup is made easy by the DataMan setup tool software common to all DataMan products. The software makes the deployment of readers for new and existing applications simple with an intuitive interface and easy reader configuration.

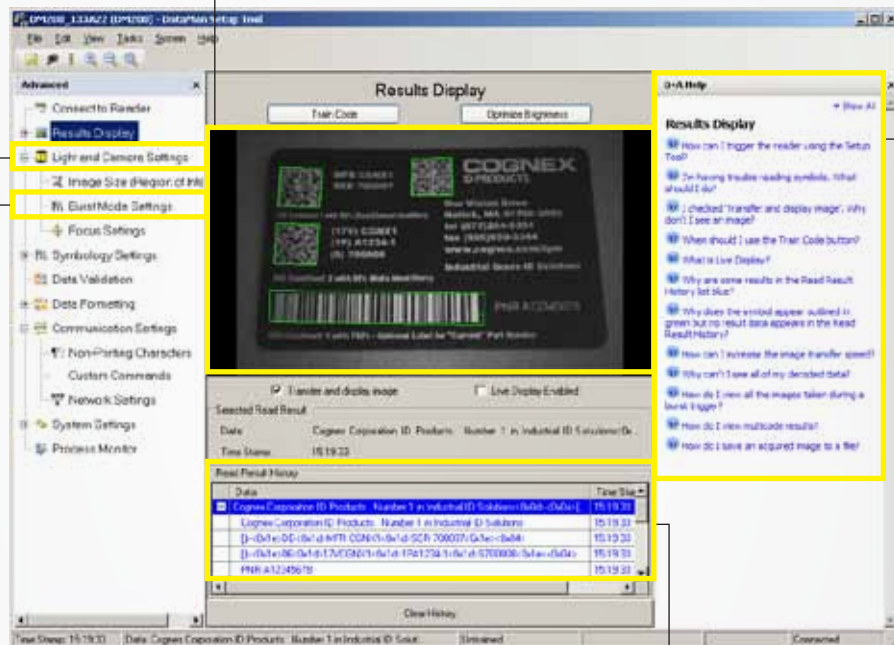
MultiCode Capability

DataMan fixed-mount readers now supports the ability to read multiple codes in the field of view. MultiCode provides the ability to read multiple codes in a single image (single or self trigger mode) or in a sequence of images (burst trigger mode) with DataMan 100, 200, 500 and 8000 series readers. The reader is able to read different code types (1-D Stacked, Data Matrix, QR) at the same time, and can read up to 128 codes at once!

In addition, the reader can also store a 'trained' mode for each code type (1-D Stacked, Data Matrix, QR) for even more robust reading.

Easy to adjust camera settings

Easy-to-access Q&A section



Burst Trigger Mode

Burst Trigger mode allows you to capture and process a sequence of images. With the Setup Tool it is possible to view a complete sequence of burst mode images in a filmstrip, to allow for adjusting settings of trigger delay, burst length and interval between acquisitions to optimize the specific application.

Results and data image history log

Integrating DataMan ID readers into the factory floor is easy with Cognex Connect, a comprehensive suite of communications capabilities, including EtherNet/IP and PROFINET. By supporting open standard industrial Ethernet communications protocols, Cognex Connect makes it easy to configure and monitor a network of Cognex ID readers.



As a network device, DataMan ID readers can be accessed from any terminal connected to the network. This means that no host PC is required to translate RS-232 or USB communications to a PLC or central network. The protocols also allow for data files and images to be archived directly through FTP support for later review and analysis. DataMan ID readers also offer a .NET based command library for customizing user-specific GUIs and terminal interfaces as well as providing control via a simple command line interface.

Accessories and Verifiers

Handheld Reader Accessories

DataMan 8000 Presentation Stand:	The stand has a custom holder specifically designed for the DataMan 8000 series of readers. The stand has a flexible weighted base and flexible neck to provide optimal presentation and storage positioning.
DataMan 8000 Overhead Retractor:	The overhead pulley attaches to the latch plate built into the DataMan 8000 series of readers to allow for it to be suspended over equipment.
DataMan 8000 Wall Mount Bracket:	The bracket has a custom holder specially designed for the DataMan 8000 series of readers. The wall mount bracket includes a pair of nuts/bolts for metal frame mounting and wood screws for wall mounting.
DataMan 8000 Belt Retractor:	The belt includes a clip and swivel retractor which attaches to the latch plate built into the DataMan 8000 series readers.
DataMan 7550 Charging Base Station:	Additional base station for charging the DataMan 7550 batteries only.
DataMan 7550 Spare Battery:	Additional battery provides eight hours of charge during normal operation.

DataMan 2-D Data Matrix verifiers provide the reliable and compliant results that manufacturers need to meet the latest 2-D code quality standards, which are mandated by most industries today. DataMan verifiers include two different platforms for the ultimate in flexibility—handheld and fixed-mount.

DataMan Handheld Verifiers

DataMan 7500 series verifiers offer superior ease-of-use and are highly cost effective.

- Compliant results to the AIM DPM Quality Guideline 2006-1 with 30 degree angle lighting
- Integrated lighting
- Selectable lighting quadrants
- Corded and cordless models
- Mechanical standoff



DataMan Fixed-mount Verifiers

DataMan 100 series verifiers offer superior ease-of-use and are highly cost effective.

- Compliant results for the AIM DPM Quality Guideline 2006-1, ISO15415, and AS9132
- ISO15426-2 compliance to 'Judge' certified cards from GS1
- Flexible lighting options
- Flexible optics
- Easy setup



DataMan Applications

For the past 30 years, Cognex has offered Automatic Identification (Auto ID) to a variety of industries:



Automotive Traceability
Read difficult DPM codes and codes on labels and electronics..



Code Reading on Packages
Read codes on virtually any surface—from plastic to glass to corrugated material.



Food & Beverage
Read codes on bottles, cans, and containers at high speeds.



Document Handling
Read 1-D and 2-D codes at high speeds on postal and parcels.



Pharmaceutical Traceability
Read a variety of codes, including Pharmacodes, for easy traceability.



Code Reading on PCBs for Electronics
Read small to large 1-D and 2-D codes, at the same time!



Medical Devices
Read 1-D, 2-D and direct part mark 2-D codes for traceability on medical devices.



Presentation Scanning
DataMan can be setup for presentation scanning stations for the highest operator throughput.



Tote ID & Sorting
Read barcodes on totes quickly and accurately.



Side Scanning
Read codes in print and apply or other side scanning applications.



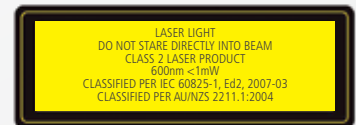
Carton Coding
With the patented code reading technology, easily read codes on virtually any surface.



Top Side Sorting
Read barcodes on fast moving ship sorter applications.

Handheld Reader Specifications

	750 S	750	7550/7550 LR	8100	8500
1-D Codes			Yes		
2-D Codes			Yes		
Composite Symbology ³			Yes		
Decoding Algorithm	IDQuick	1DMax/2DMax	1DMax/2DMax	1DMax/2DMax	1DMax/2DMax
Image Sensor	752 x 480 global shutter	752 x 480 global shutter	1280 x 960 rolling shutter	1280 x 1024 high resolution sensor	1280 x 1024 high resolution sensor
Lens Type	3-position (40/65/105mm) Adjustable	3-position (40/65/105mm) Adjustable	Fixed	Variable focus liquid lens (working distances from 0 to over 500mm)	Variable focus liquid lens (working distances from 0 to over 500mm)
Trigger	Handle trigger, Presentation mode				
Aimer	Laser (CDRH/IEC Class II)	Laser (CDRH/IEC Class II)	LED	Laser Aimer, Class II	Laser Aimer, Class II
Status Outputs	LED, beeper and vibration	LED, beeper and vibration	Multi-functional LED and beeper	LED, beeper and vibration	LED, beeper and vibration
Lighting	Integrated bright field	Integrated bright field	UltraLight (bright, dark and diffuse lighting)	Integrated bright field	UltraLight (bright, dark and diffuse lighting)
Communications	RS-232 and USB, PS/2	RS-232 and USB, PS/2	RS-232 and USB, PS/2	Serial Module: RS-232 , USB and PS/2 Ethernet Module: EIP, PROFINET, TCP/IP and FTP	Serial Module: RS-232 , USB and PS/2 Ethernet Module: EIP, PROFINET, TCP/IP and FTP
Bluetooth	No	No	Class 2 (10 meter range)	No	No
Power	5VDC	5VDC	9VDC	Serial/USB: +5 to +6 VDC, 2.5 W maximum LPS or NEC Class 2 power supply Ethernet: PoE Class 2 supply	Serial/USB: +5 to +6 VDC, 2.5 W maximum LPS or NEC Class 2 power supply Ethernet: PoE Class 2 supply
Power Consumption	500mA @ 5VDC max	500mA @ 5VDC max	800mA @ 9VDC max		
Material	Polycarbonate	Polycarbonate	Polycarbonate housing with overmold	Polycarbonate housing with overmold	Polycarbonate housing with overmold
Weight	110g	110g	330g	326g	326g
Dimensions	151mm x 54mm x 49mm	151mm x 54mm x 49mm	175mm x 134mm x 81mm	220mm x 155mm x 85mm	220mm x 155mm x 85mm
Operating Temperature	0°C to 50°C (32°F to 122°F)	0°C to 50°C (32°F to 122°F)	0°C to 50°C (32°F to 122°F)	0°C to 40°C (32°F to 104°F)	0°C to 40°C (32°F to 104°F)
Storage Temperature	-10°C to 60°C (14°F to 140°F)	-10°C to 60°C (14°F to 140°F)	-40°C to 60°C (-40°F to 140°F)	-40°C to 60°C (-40°F to 140°F)	-40°C to 60°C (-40°F to 140°F)
Drop Resistance	50 drops from 2 Meters	50 drops from 2 Meters	25 drops from 2 Meters	50 drops from 2 Meters	50 drops from 2 Meters
Operating and Storage Humidity	0% to 95%, non-condensing				
Protection	IP50	IP50	IP54		
ESD Safe	Yes	Yes	No	No	No
DoD UID Data Validation	No	Yes	Yes	Yes	Yes
RoHS Certified			Yes		
Approvals (CE, UL, FCC)			Yes		
Operating System	Microsoft® Windows® XP and Windows Vista® 32	Microsoft® Windows® XP and Windows Vista® 32	Microsoft® Windows® XP and Windows Vista® 32	Microsoft® Windows® XP and Windows 7 32 bit and 64bit	Microsoft® Windows® XP and Windows 7 32 bit and 64bit



Fixed-mount Reader Specifications

	100 S	100 QL	100 Q	100 X	200 S	200 QL	200 Q	200 X
1-D Codes					Yes			
2-D Codes	Yes	No	Yes	Yes	Yes	No	Yes	Yes
Composite Symbology					Yes			
Decoding Algorithm	Standard	1DMax	1DMax, IDQuick	1DMax, IDQuick, 2DMax	Standard	1DMax	1DMax, IDQuick	1DMax, IDQuick, 2DMax
Image Sensor	752 x 480 global shutter							
Acquisition	Max 5 fps	Max 60 fps	Max 60 fps	Max 60 fps	Max 5 fps	Max 60 fps	Max 60 fps	Max 60 fps
Decode Rate	Max 5/sec		Max 45/sec	Max 45/sec	Max 5/sec	Max 45/sec		Max 45/sec
Lens Type	3-position (40/65/105mm) Adjustable. SHD, C-Mount	3-position (40/65/105mm) Adjustable. SHD, C-Mount	3-position (40/65/105mm) Adjustable. SHD, C-Mount	3-position (40/65/105mm) Adjustable. SHD, C-Mount	3-position (40/65/105mm) Adjustable. C-Mount	3-position (40/65/105mm) Adjustable or variable focus liquid lens. C-Mount	3-position (40/65/105mm) Adjustable or variable focus liquid lens. C-Mount	3-position (40/65/105mm) Adjustable or variable focus liquid lens. C-Mount
Trigger	Manual; External: Single; Internal: Self & Presentation	Manual; External: Single, Burst & Continuous; Internal: Self & Presentation	Manual; External: Single, Burst & Continuous; Internal: Self & Presentation	Manual; External: Single, Burst & Continuous; Internal: Self & Presentation	Manual; External: Single; Internal: Self & Presentation	Manual; External: Single, Burst & Continuous; Internal: Self & Presentation	Manual; External: Single, Burst & Continuous; Internal: Self & Presentation	Manual; External: Single, Burst & Continuous; Internal: Self & Presentation
Aimer	LED	LED	LED	LED	Dual Laser (CDRH/ IEC Class II)	Dual Laser (CDRH/ IEC Class II)	Dual Laser (CDRH/ IEC Class II)	Dual Laser (CDRH/ IEC Class II)
Discrete Inputs					2 Opto-isolated			
Discrete Outputs					2 Opto-isolated			
Status Outputs	Beeper and 2 multi-functional LEDs	Beeper and 2 multi-functional LEDs	Beeper and 2 multi-functional LEDs	Beeper and 2 multi-functional LEDs	Beeper and 3 multi-functional LEDs	Beeper and 3 multi-functional LEDs	Beeper and 3 multi-functional LEDs	Beeper and 3 multi-functional LEDs
Lighting					Integrated bright field			
Communications	RS-232 and USB	RS-232 and USB	RS-232 and USB	RS-232 and USB	Ethernet and RS-232	Ethernet and RS-232	Ethernet and RS-232	Ethernet and RS-232
Power	5VDC to 24VDC	5VDC to 24VDC	5VDC to 24VDC	5VDC to 24VDC	36VDC to 57VDC (PoE)	36VDC to 57VDC (PoE)	36VDC to 57VDC (PoE)	36VDC to 57VDC (PoE)
Power Consumption	500mA @ 5VDC max	500mA @ 5VDC max	500mA @ 5VDC max	500mA @ 5VDC max	50mA @ 48VDC max	50mA @ 48VDC max	50mA @ 48VDC max	50mA @ 48VDC max
Material	Aluminum							
Weight	125g	125g	125g	125g	75g	75g	75g	75g
Dimensions	55mm x 42mm x 22mm	55mm x 42mm x 22mm	55mm x 42mm x 22mm	55mm x 42mm x 22mm	64mm x 42mm x 21mm	64mm x 42mm x 21mm	64mm x 42mm x 21mm	64mm x 42mm x 21mm
Operating Temperature	0°C to 40°C (32°F to 104°F)							
Storage Temperature	-10°C to 60°C (14°F to 140°F)							
Operating and Storage Humidity	0% to 95%, non-condensing							
Protection	IP65							
ESD Safe	Yes, with ESD safe cover							
DoD UID Data Validation	No	Yes	Yes	Yes	No	Yes	Yes	Yes
RoHS Certified					Yes			
Approvals (CE, UL, FCC)					Yes			
Operating System	Windows® XP, WindowsVista® 32 and Windows 7 32 and 64 bit							



Fixed-mount Reader Specifications

	500 QL	500 X
1-D Codes	Yes	
2-D Codes	No	Yes
Composite Symbology	Yes	
Decoding Algorithm	1DMax	1DMax, IDQuick, 2DMax
Image Sensor	1024 x 768 global shutter	
Acquisition	Max 1000 fps	
Decode Rate	Max 90/sec	
Lens Type	CS mount	
Trigger	Manual: External: Single, Burst & Continuous: Internal: Self & Presentation	
Aimer	Dual Laser (CDRH/IEC Class II)	
Discrete Inputs	4 Opto-isolated	
Discrete Outputs	4 Opto-isolated	
Status Outputs	Beeper and 5 multifunctional LEDs	
Lighting	Integrated bright field	
Communications	Ethernet and RS-232	
Power	36VDC to 57VDC(PoE)	
Power Consumption	270mA @ 48VDC	
Material	Aluminum	
Weight	350g	
Dimensions	106mm x 70mm x 52mm	
Operating Temperature	0°C to 40°C (32°F to 104°F)	
Storage Temperature	-10°C to 60°C	
Operating and Storage Humidity	0% to 95%, non-condensing	
Protection	IP65	
ESD Safe4	No	
DoD UID Data Validation	Yes	
RoHS Certified	Yes	
Approvals (CE, UL, FCC)	Yes	
Operating System	Windows® XP, Windows Vista® 32 and Windows 7 32 and 64 bit	



COGNEX Companies around the world rely on Cognex vision and ID to optimize quality, drive down costs and control traceability.

Corporate Headquarters One Vision Drive Natick, MA USA Tel: +1 508.650.3000 Fax: +1 508.650.3344

Americas

United States, East +1 508.650.3000
 United States, West +1 650.969.8412
 United States, South +1 615.844.6158
 United States, Detroit +1 248.668.5100
 United States, Chicago +1 630.649.6300
 Canada +1 905.634.2726
 Mexico +52 81 5030-7258
 Central America +52 81 5030-7258
 South America +1 972.365.3463
 Brazil +55 11 9648-6400

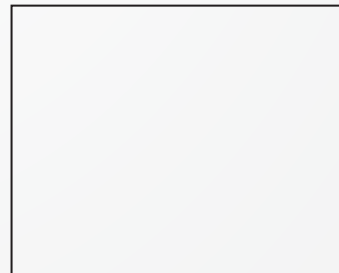
Europe

Austria +43 1 23060 3430
 Belgium +32 2 8080 692
 France +33 1 4777 1550
 Germany +49 721 6639 0
 Hungary +36 1 501 0650
 Ireland +353 1 825 4420
 Italy +39 02 6747 1200
 Netherlands +31 208 080 377
 Spain +34 93 445 67 78
 Sweden +46 21 14 55 88
 Switzerland +41 71 313 06 05
 United Kingdom +44 1908 206 000

Asia

China +86 21 6320 3821
 India +91 80 4022 4118
 Japan +81 3 5977 5400
 Korea +82 2 539 9047
 Singapore +65 632 55 700
 Taiwan +886 3 578 0060

www.cognex.com



© Copyright 2011, Cognex Corporation. All information in this document is subject to change without notice. Cognex, DataMan, UltraLight and IDMax are registered trademarks and 1DMax, 2DMax, IDQuick and VSoC are trademarks of Cognex Corporation. All other trademarks are the property of their respective owners. Printed in the U.S.A. Lit. No. ML3195-0211.